



Installing Sophos on MSU Computer

Sophos is the new antivirus software used by MSU. Because Sophos is replacing Symantec Antivirus and Symantec Endpoint Protection, it should be installed on your MSU computer and your home computer (if applicable) as soon as possible. Before installing Sophos, verify it is not installed on your computer.

There are two different versions available. One version is available for MSU computers and another version is available for your home computer. It is very important that you download and install the correct version on the right computer.

You do not have to uninstalled Symantec Antivirus or Symantec Endpoint Protection. When installing Sophos, it will uninstall Symantec software automatically. Once you have installed Sophos on your computer, you will need to verify the firewall is turned back on, restart your computer, and check for updates.

Verifying Antivirus Software Currently Installed

If your computer has been reloaded since the last week of April 2010, Sophos may already be installed on your computer. Follow the instructions below to see which antivirus software is installed on your computer.

Step 1: **Left-click** Start. **Left-click** All Programs.

Step 2: Look through the All Programs window and verify the antivirus software you have installed. You will either have Symantec Antivirus, Symantec Endpoint Protection, or Sophos.

Step 3: If Symantec is installed proceed with installing Sophos on your computer. If Sophos is already installed on your computer, navigate to the Checking for Updates section on page 3.

Installing Sophos on **MSU** Computer

Step 1: Navigate to the X drive by double left-clicking the My Computer icon on the desktop.

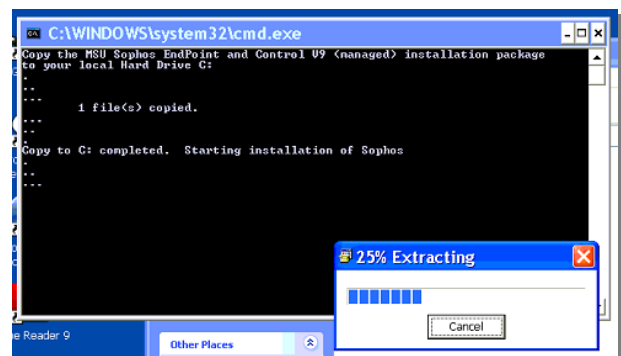
Step 2: Double left-click the X drive.

Note: If necessary, access this link to map the X drive on your computer http://cas-resource-center.com/joomla/images/video/howdoi/howdoi_print/drives/mapping_x_drive_3209.pdf.

Step 3: Double left-click the MSUES folder. Open the MSU Sophos AntiVirus folder.

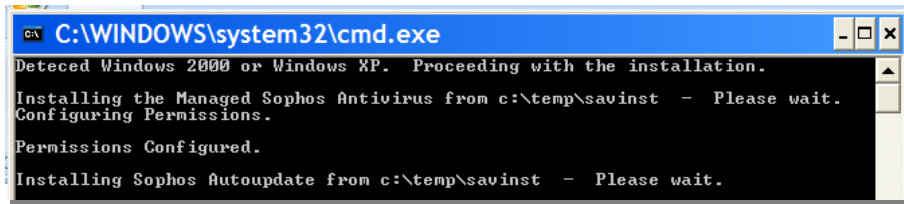
Step 4: Double left-click the Sophos2C file.

Step 5: **Left-click** Run. The file will be copied to your computer and you will see an extraction window.

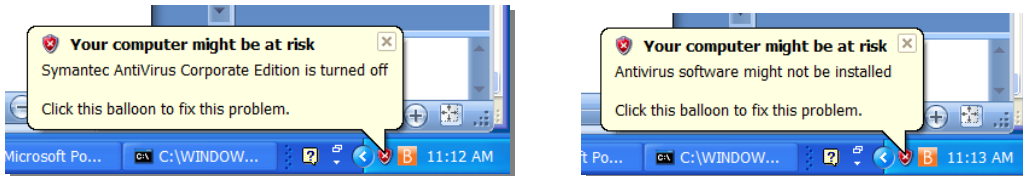




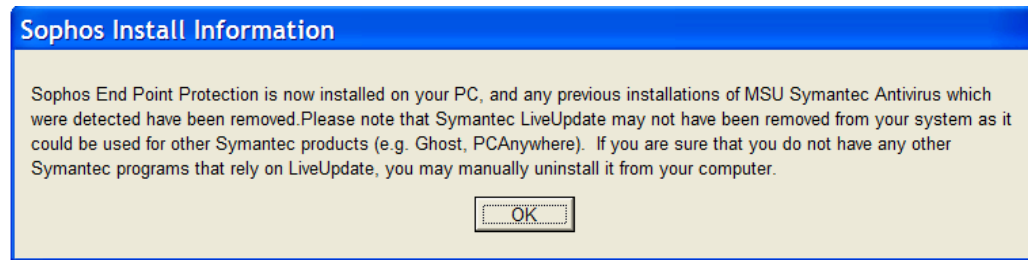
Step 6: Once the extraction process is completed, a command window will appear. This may take a few minutes.



Note: There will be some pop-ups above your clock. Each popup will disappear.



Step 7: Along with the Sophos AutoUpdate window, a Sophos Install Information window will appear. **Left-click** OK.



Note: Another pop-up will appear stating Sophos Antivirus is turned off. It will disappear.

Step 8: A new icon will appear in the system tray near the clock. **New Icon**

Note: After installing Sophos, the firewall should automatically be turned on. Wait until the computer at risk message disappears and follow the instructions in the Turning Firewall On section to determine if the firewall is on.

Turning the Firewall On

If the firewall is turned off, you will notice a red shield with a white X in the system tray near your clock and you will need to turn the firewall on.

Step 1: **Left-click** Start. **Left-click** Control Panel. **Red Shield**

Step 2: **Double left-click** Security Center. If the firewall is turned off, proceed to step 3. If the firewall is turned on, close all open windows and proceed to the Rebooting Your Computer section.





ResourceCenter

COMPUTER APPLICATIONS AND SERVICES

Step 3: **Left-click** Windows Firewall at the bottom of the screen.



Firewall is turned off

Step 3

Step 4: **Left-click** On. **Left-click** OK. Close all open windows.

Verifying the Installation is Completed

Before proceeding with the final steps, you will need to verify the installation is completed by viewing the Sophos icon in the system tray near your clock.

Step 1: Navigate to the Sophos icon in the system tray near the clock.

New Icon



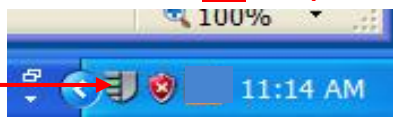
Step 2: If the icon is blue and green, the installation is not completed.

Step 3: If it is completely blue, the installation is completed. You may reboot your computer.

Installation is not completed

Installation is completed

Step 2



Step 3



Rebooting Your Computer

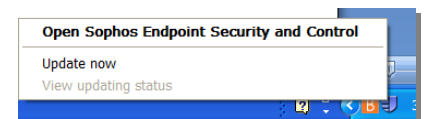
After installing Sophos on your computer and verifying the installation is completed, you will need to reboot your computer.

Checking for Updates

After installing the software and rebooting your computer, you will need to check for updates for Sophos.

Step 1: **Right-click** on the Sophos icon in the system tray near the clock.

Step 2: **Left-click** Update now. Once the updates are completed, the window will disappear.



Still can't fix it? Email the CAS Resource Center at fixit@ext.msstate.edu

